

# Proposal 127

# Moose

Establish a registration moose hunt in the closed portion of Unit 19A

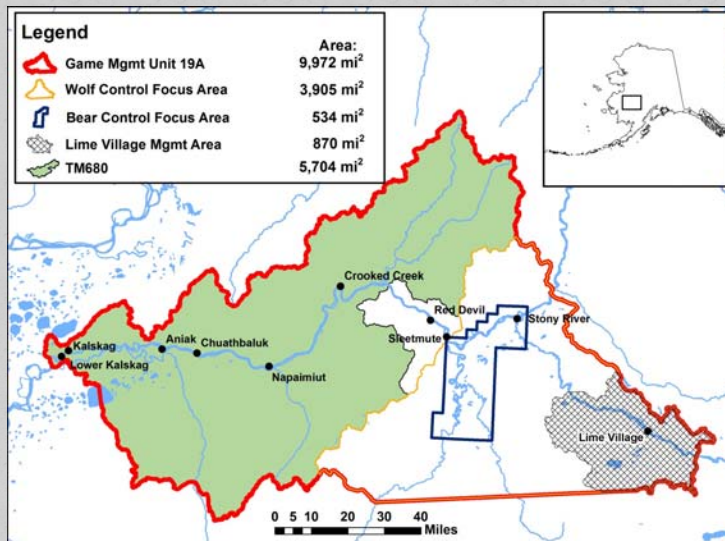
Recommendation: NEUTRAL

Submitted by: Public

Stony Holitna AC: Support with amendments  
McGrath AC: Support with amendments  
Central Kuskokwim AC: Support with amendments

# Proposal 127

# Moose



# Proposal 127

# Moose

## Current Unit 19A Regulations:

### TM680

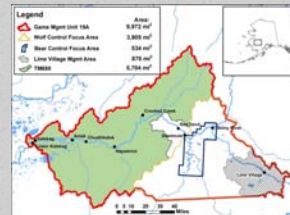
- Sept 1 – Sept 20
- one antlered bull

### TM684

- Aug 10 – Sept 25 and Nov 20 – Mar 31
- Two bulls

### 19A Remainder

- No open season.



# Proposal 127

# Moose

## Proposed Regulations:

- Open closed portion of Unit 19A
- Registration permit
- Season dates not specified
- Permits available in Sleetmute
- Permits issued for 1 week, one month before season
- Cannot hold any other permits on the Kuskokwim



# Proposal 127

# Moose

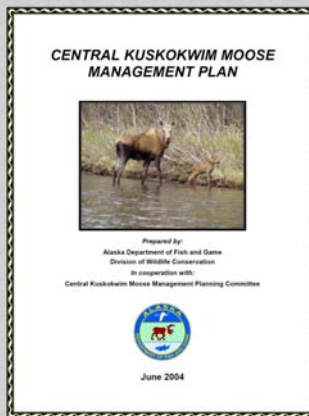
## Regulatory History

- 2000 and 2001 winter hunt closed by emergency order.
- 2002 BOG changes to moose seasons to address declining moose populations.
- Board also requested the Department initiate a planning process.

# Proposal 127

# Moose

## Regulatory History



## Proposal 127

## Moose

### Regulatory History

- RM640 moose permits
  - 1,031 permits in 2004
  - 1,086 permits in 2005
- 57% of all permits went to Unit 18 hunters and 39% went to Unit 19A hunters
- Approximately 82% of permittees hunted
- Average of 147 moose harvested annually

7

## Proposal 127

## Moose

### Regulatory History

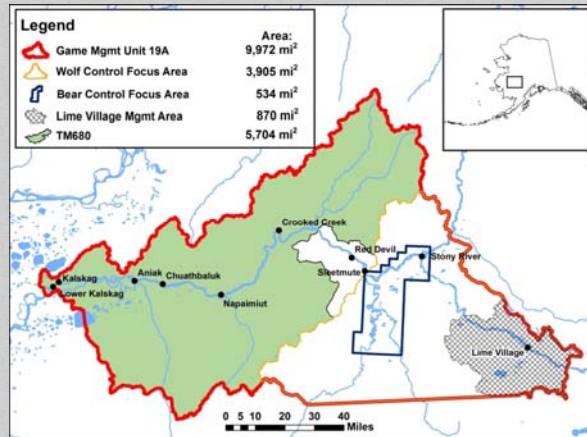
- 2006 BOG meeting proposal 70
  - Recommended closing 19A east (excluding the LVMA)
  - Recommended creating a tier II hunt in 19A west
  - Harvestable surplus was being exceeded under RM640
  - No harvestable surplus in 19A east (excluding the LVMA)
  - Harvestable surplus of 60 in 19A west

8

# Proposal 127

# Moose

## Regulatory History



9

# Proposal 127

# Moose

## Regulatory History

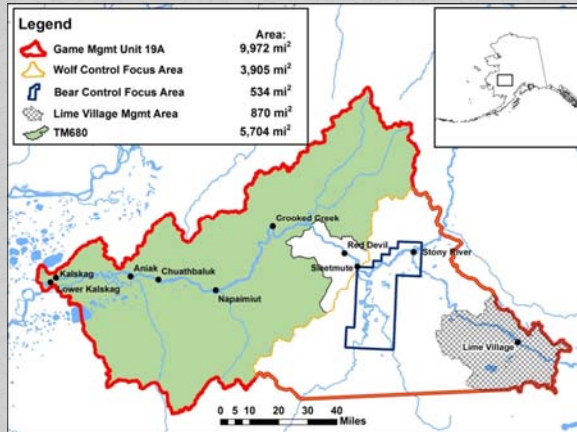
- The CKAC submitted proposal 17 to split the AC.
  - The Joint Board of Fisheries and Game passed the proposal creating the new CKAC and the Stony Holitna AC or SHAC.
  - The new CKAC includes Lower Kalskag, Kalskag, Aniak, Chuathbaluk and Crooked Creek.
  - The SHAC includes Red Devil, Sleetmute, Stony River and Lime Village.

10

# Proposal 127

# Moose

## Predator Control



# Proposal 127

# Moose

## Wolf Control

| Period  | Regulatory Year | Harvest removal |      | Public control removal | Total removal |
|---------|-----------------|-----------------|------|------------------------|---------------|
|         |                 | Trap            | Hunt |                        |               |
| Year 1  | 2004            | 3               | 0    | 40                     | 43            |
| Year 2  | 2005            | 2               | 0    | 36                     | 38            |
| Year 3  | 2006            | 0               | 0    | 7                      | 7             |
| Year 4  | 2007            | 0               | 3    | 12                     | 15            |
| Year 5  | 2008            | 1               | 0    | 19                     | 20            |
| Year 6  | 2009            | 0               | 0    | 2                      | 2             |
| Year 7  | 2010            | 1               | 0    | 10                     | 11            |
| Year 8  | 2011            | 0               | 0    | 8                      | 8             |
| Year 9  | 2012            | 2               | 0    | 0                      | 2             |
| Year 10 | 2013            | 2               | 0    | 6                      | 8             |
| Year 11 | 2014            | 4               | 1    | 2                      | 7             |
| Year 12 | 2015            | 1               | 0    | 0                      | 1             |
| Year 13 | 2016            | 1               | 0    | 14                     | 15            |
| Year 14 | 2017            | 2               | 0    | 1                      | 3             |

# Proposal 127

# Moose

## Bear Control

| Year | Black Bear | Grizzly Bear |
|------|------------|--------------|
| 2013 | 84         | 5            |
| 2014 | 54         | 10           |

# Proposal 127

# Moose

## November Moose Composition Data

| Regulatory year | Bulls:100 cows | Calves: 100 cows | Moose |
|-----------------|----------------|------------------|-------|
| 2004            | 8              | 24               | 307   |
| 2007            | 35             | 45               | 200   |
| 2008            | 34             | 27               | 124   |
| 2009            | 51             | 36               | 129   |
| 2010            | 48             | 19               | 212   |
| 2011            | 38             | 31               | 164   |
| 2013            | 55             | 50               | 244   |
| 2016            | 58             | 55               | 273   |
| 2017            | 36             | 34               | 300   |
| 2018            | 52             | 40               | 343   |

# Proposal 127

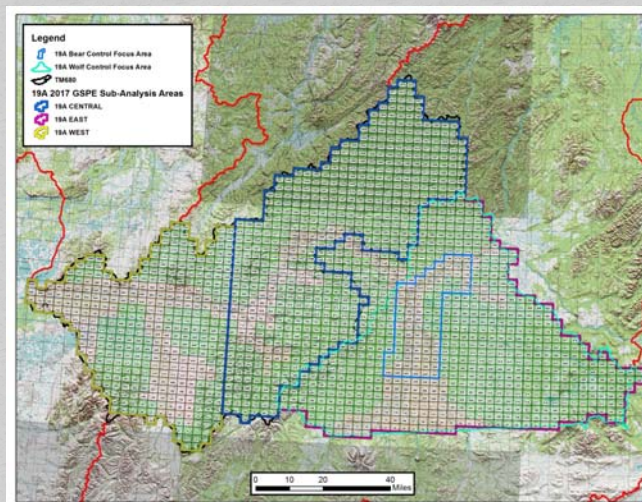
# Moose

## Twinning Data

| Year | Twinning Rate | n  |
|------|---------------|----|
| 2013 | 56%           | 41 |
| 2014 | 63%           | 48 |
| 2018 | 65%           | 40 |

# Proposal 127

# Moose





# Proposal 127

# Moose

## 2017 GSPE Population Results

| Area        | Total Moose (w/SCF) | Total Area    | Density    | Harvestable Surplus (4%) |
|-------------|---------------------|---------------|------------|--------------------------|
| TM680       | 4,135               | 5,735         | 0.7        | 165                      |
| LVMA        | 232                 | 870           | 0.3        | 10                       |
| Closed area | 1,932               | 3,419         | 0.6        | 77                       |
| <b>19A</b>  | <b>6,300</b>        | <b>10,024</b> | <b>0.6</b> | <b>252</b>               |

17

# Proposal 127

# Moose

## Eastern 19A GSPE Results

| Year | Moose/mi <sup>2</sup> |
|------|-----------------------|
| 2005 | 0.3                   |
| 2008 | 0.4                   |
| 2011 | 0.4                   |
| 2017 | 0.6                   |

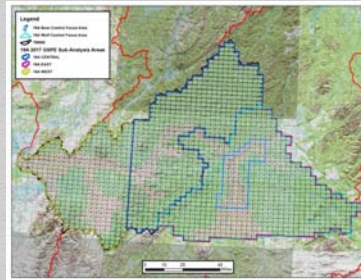
18

## Proposal 127

## Moose

### TM680 Survey Results

- 2010 western survey area 0.4 moose/mi<sup>2</sup>
- 2017 western survey area 1.3 moose/mi<sup>2</sup>
- 2010 TM680 0.3 moose/mi<sup>2</sup>
- 2017 TM680 0.7 moose/mi<sup>2</sup>



19

## Proposal 127

## Moose

### IM objectives

- Population objective
  - 7,600 – 9,300 moose (0.8 – 0.9 moose/mi<sup>2</sup>)
  - Currently at 6,300 moose or 0.6/mi<sup>2</sup>
- Harvest objective
  - 400 - 550 moose
  - 2016 harvest 157

20

## Proposal 127

## Moose

### Harvest Summary

- Except for LVMA moose hunting closed in eastern 19A since 2006
  - 10 year average of 2 bulls/year in LVMA
- TM680 area has been tier II since 2006
  - State hunt: average 80 bulls/year
    - 54 bulls in 2007 to 112 bulls in 2016
  - Federal hunt: average 19 bulls/year
    - 16 bulls in 2007 to 45 bulls in 2016

21

## Proposal 127

## Moose

### Amounts Necessary for Subsistence

- Positive C&T determination for Unit 19 of 400-700 moose outside the LVMA including:
  - 175-225 in Unit 19A
  - 20-24 in Unit 19B
  - 30-40 in the LVMA
- Harvestable surplus for 19A outside LVMA 242

22

## Proposal 127

---

## Moose

Establish a registration moose hunt in  
the closed portion of Unit 19A

Recommendation: NEUTRAL

Submitted by: Public

Stony Holitna AC: Support with amendments  
McGrath AC: Support with amendments  
Central Kuskokwim AC: Support with amendments

23

---

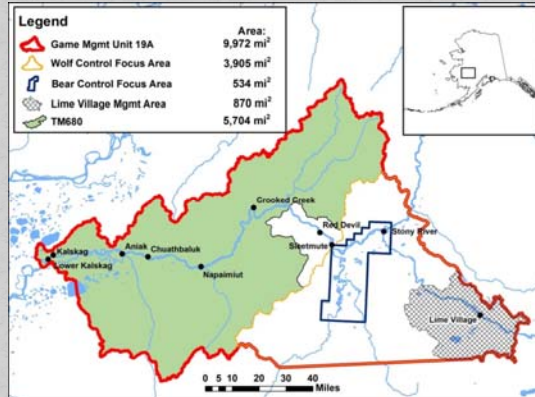
**END**

24

# Proposal 127

# Moose

| Survey Area | Total Moose | 2% | 3% | 4% |
|-------------|-------------|----|----|----|
| Closed Area | 1932        | 39 | 58 | 77 |
| BCFA        | 728         | 15 | 22 | 29 |



25

## Proposal 126

### Moose / Unit 16A

**Allow additional harvest opportunity in Unit 16A by providing an antlerless hunt and/or “any bull” hunt**

**BOG Proposal**

**Department Recommendation: SUPPORT**

*Mat Valley AC  
Support (0-0)  
Susitna Valley AC  
Support (0-0)*

2  
6

## Proposal 126

### Moose / Unit 16A

#### Current Regulations

- Harvest Ticket - Spike/Fork, 50" antlers, or at least 3 brow tines on one side.
- Aug 10 – 17 Archery season
- Aug 20 – Sept 25 General season

#### Background

- Population objective: 3,500–4,000 moose
- Harvest objective: 190–360
- Entirely within Anchorage-Matsu-Kenai Nonsubsistence Area
- 1993: Spike/Fork, 50" antlers, or at least 3 brow tines on one side
- Western portion of Unit 16A was under predation control between RY05–RY17

2  
7

## Proposal 126

### Moose / Unit 16A

#### Proposed Regulations – Resident Hunters

A) One (1) antlerless moose by drawing permit only; Up to 2,000 permits

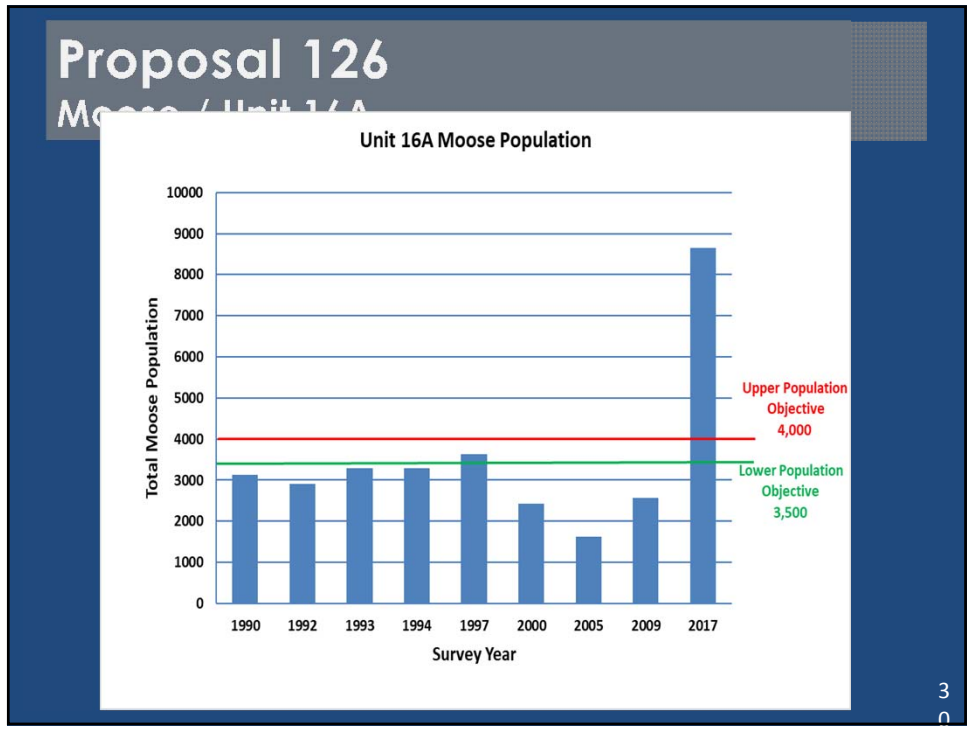
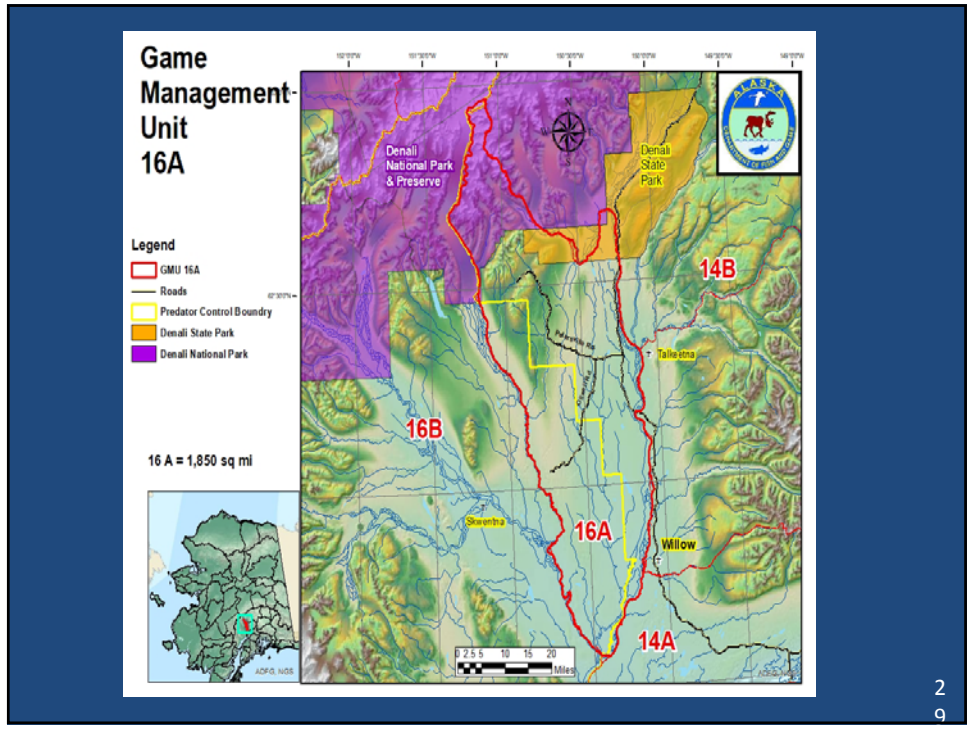
Aug 20–Sept 25 & Nov 1–Last day of February

*And/or*

B) One (1) bull moose by drawing permit only; Up to 500 permits

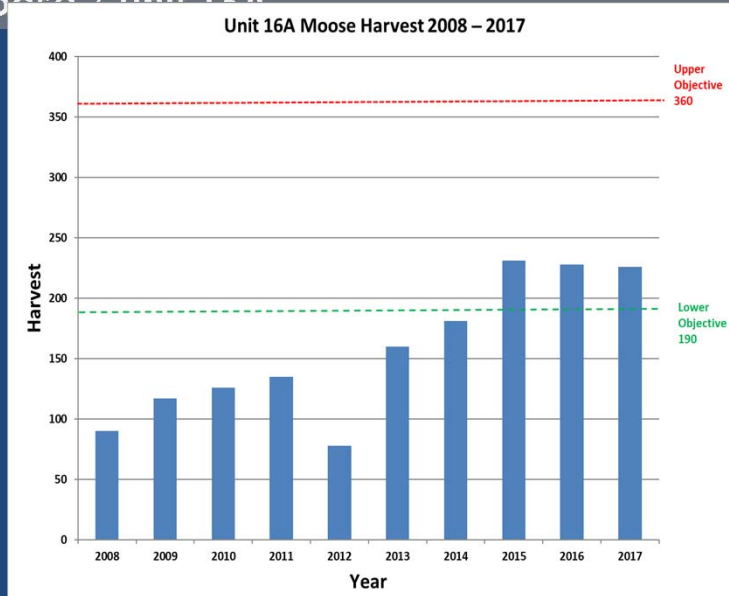
Aug 20–Sept 25 & Nov 1–Dec 15

2  
8



# Proposal 126

## Moose / Unit 16A



3  
1

# Proposal 126

## Moose / Unit 16A

| Unit 16A Moose Survey Data |          |          |           |           |           |           |              |
|----------------------------|----------|----------|-----------|-----------|-----------|-----------|--------------|
|                            | 1993     | 1994     | 1997      | 2000      | 2005      | 2009      | 2017         |
| <b>Survey Date</b>         | 4–10 Dec | 8–14 Nov | 19–24 Nov | 17–25 Nov | 22–28 Nov | 14–16 Nov | 22 Nov–9 Dec |
| <b>Survey Type</b>         | Survey   | Trend    | Survey    | Survey    | Survey    | Survey    | Survey       |
| <b>Total moose obs.</b>    | 828      | 981      | 1,234     | 787       | 590       | 853       | 1,975        |
| <b>Calves observed</b>     | 130      | 177      | 260       | 126       | 80        | 162       | 436          |
| <b>Pop Estimate</b>        | 3,284    | ~3,300   | 3,636     | 2,420     | 1,619     | 2,574     | 8,654        |
| <b>Bull:100 cows</b>       | 24.1     | 41.7     | 32.9      | 27.8      | 22.2      | 30        | 33.4         |
| <b>Calves:100 cows</b>     | 23.7     | 31.2     | 34.5      | 22.2      | 19        | 30        | 36           |

3  
2



## Proposal 126

Moose / Unit 16A

**Allow additional harvest opportunity in Unit 16A by providing an antlerless hunt and/or “any bull” hunt**

**BOG Proposal**

**Department Recommendation: SUPPORT**

*Mat Valley AC  
Support (0-0)  
Susitna Valley AC  
Support (0-0)*

3  
2

## Proposal 146

Moose / Unit 16B

**Change the bag limit for Tier II moose hunts to “any moose” and establish a resident “antlerless moose” drawing hunt in Unit 16B**

**Proposed by Susitna Valley AC**

**Department Recommendation: SUPPORT**

*Mat Valley AC  
Support (0-0)  
Susitna Valley AC  
Support (0-0)*

3  
4

# Proposal 146

## Moose / Unit 16B

### Current Regulations

- Harvest Ticket - Spike/fork, 50", or  $\geq 3$  brow tines.....Aug 20–Sept 25
- DM540 - Any Bull Draw (Up to 300 permits).....Aug 20–Sept 25
- YM541 - Youth any bull draw (Up to 100 ).....Aug 20–Sept 25  
& Nov 15–Jan 31
- Tier II - One bull (Up to 260 permits).....Dec 15–Mar 31
- RM574 - Any bull registration permit.....Dec 15–Last Day Feb

3  
5

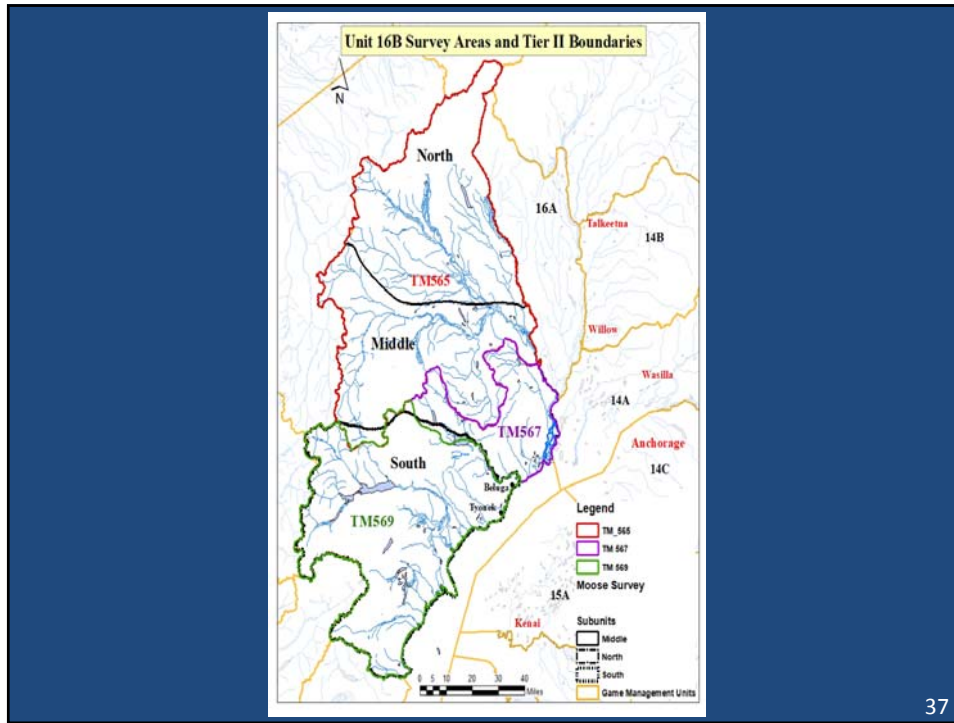
# Proposal 146

## Moose / Unit 16B

### Background

- Population Objective: 6,500 – 7,500
- Harvest Objective: 310 – 600
- Amount Necessary for Subsistence:
  - Redoubt Bay Drainages; 10
  - South of Beluga River and north of Redoubt Bay; 29 – 37
  - North of the Beluga River; 160 – 180
- Predator Control Program in Unit 16B from RY04 to present, currently inactive
  - Wolf Control RY04 – RY13
  - Black Bear Control RY06 – RY17
  - Brown Bear Control RY09 – RY17

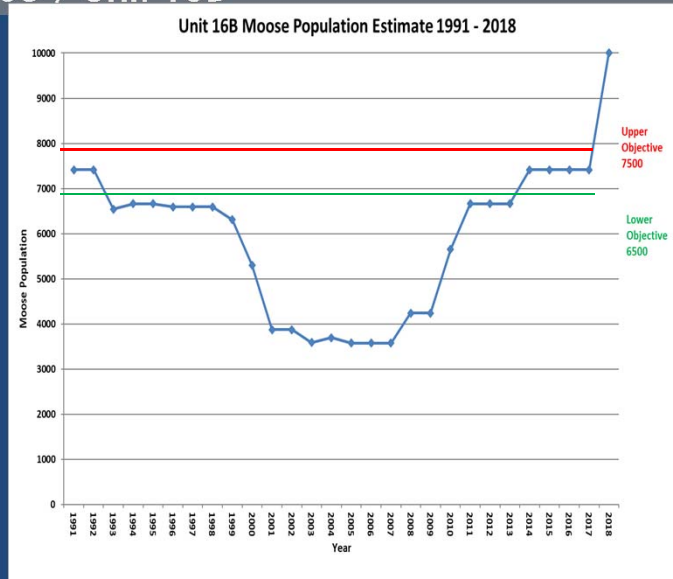
3  
6



37

# Proposal 146

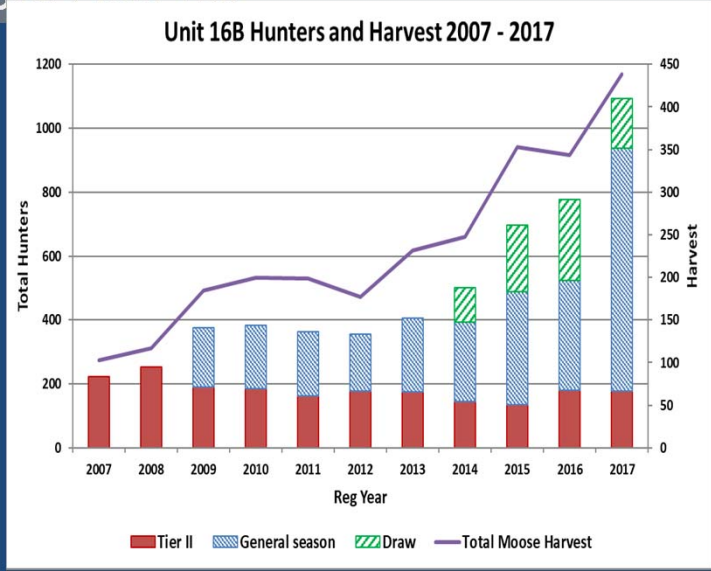
## Moose / Unit 16B



38

# Proposal 146

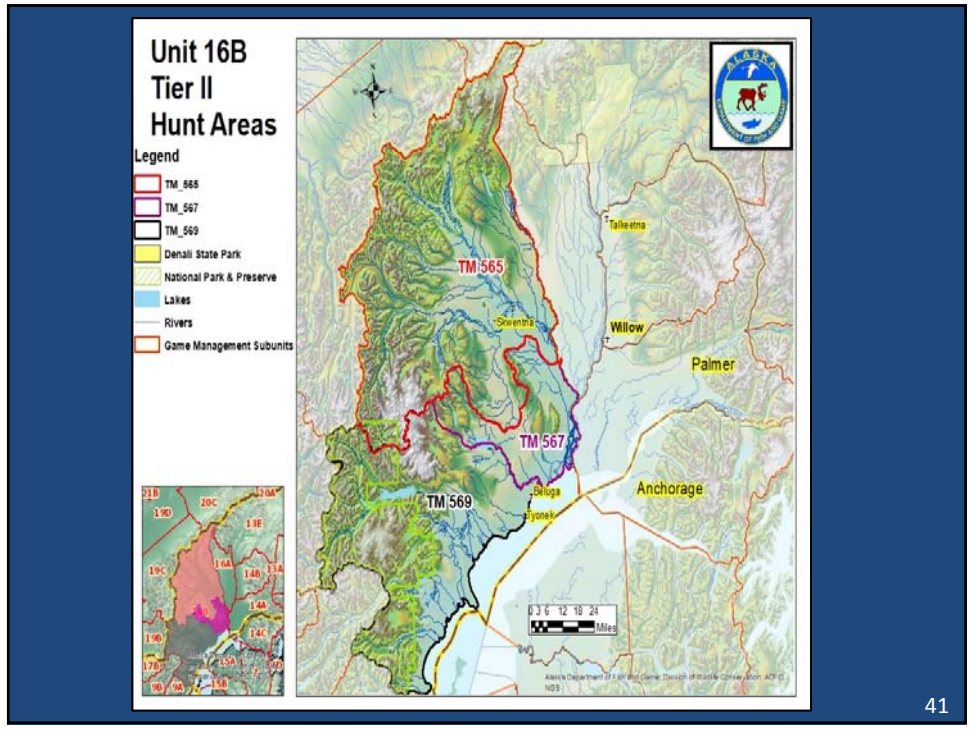
## Moose / Unit 16B



# Proposal 146

## Moose / Unit 16B

| Year   | Permit Number | Total Permits | Total Hunters | Total Harvest | Success Rate (%) | General Season Hunters |
|--------|---------------|---------------|---------------|---------------|------------------|------------------------|
| 2014   | DM540         | 150           | 84            | 35            | 42%              | 626                    |
| 2015   | DM540         | 300           | 196           | 72            | 37%              | 517                    |
| 2016   | DM540         | 300           | 203           | 77            | 38%              | 701                    |
| 2017   | DM540         | 300           | 197           | 86            | 44%              | 759                    |
|        |               |               |               | μ=            | 40%              | 651                    |
| * 2014 | DM541         | 50            | 23            | 8             | 35%              | -                      |



## Proposal 146 Moose / Unit 16B

| Reg Year    | Permits * | Hunters | Harvest | Participation | Hunter Success |
|-------------|-----------|---------|---------|---------------|----------------|
| 2013        | 278       | 174     | 91      | 63%           | 52%            |
| 2014        | 260       | 145     | 49      | 56%           | 34%            |
| 2015        | 260       | 135     | 87      | 52%           | 64%            |
| 2016        | 260       | 180     | 87      | 69%           | 48%            |
| 2017        | 260       | 177     | 96      | 68%           | 54%            |
| 5-year Avg. | 264       | 162     | 82      | 61%           | 51%            |

\* Total permits offered for TM565, TM576 and TM569

## Proposal 146

Moose / Unit 16B

**Change the bag limit for Tier II moose hunts to “any moose” and establish a resident “antlerless moose” drawing hunt in Unit 16B**

**Proposed by Susitna Valley AC**

**Department Recommendation: SUPPORT**

*Mat Valley AC  
Support (0-0)  
Su Valley AC  
Support (0-0)  
Mt. Yenlo AC*

43

## Proposal 128

## 13 Controlled Use

Modify the Clearwater Creek Controlled Use Area

**Department Recommendation: SUPPORT w/ amendments**

Department Proposal *Modified by* BOG

---

*Copper Basin: 8-0-0 Amend CCGUA boundary but **OPPOSED** to motorized hunting on MST*

*Denali: 0-6-0 **OPPOSED** to motorized hunting access on MST*

*Paxson: 0-4-0 **OPPOSED** to motorized hunting access on MST*

*Tok Cutoff: Have not voted on Prop 128 but supported original Prop 123 in 2018*

44

# Proposal 128

# 13 Controlled Use

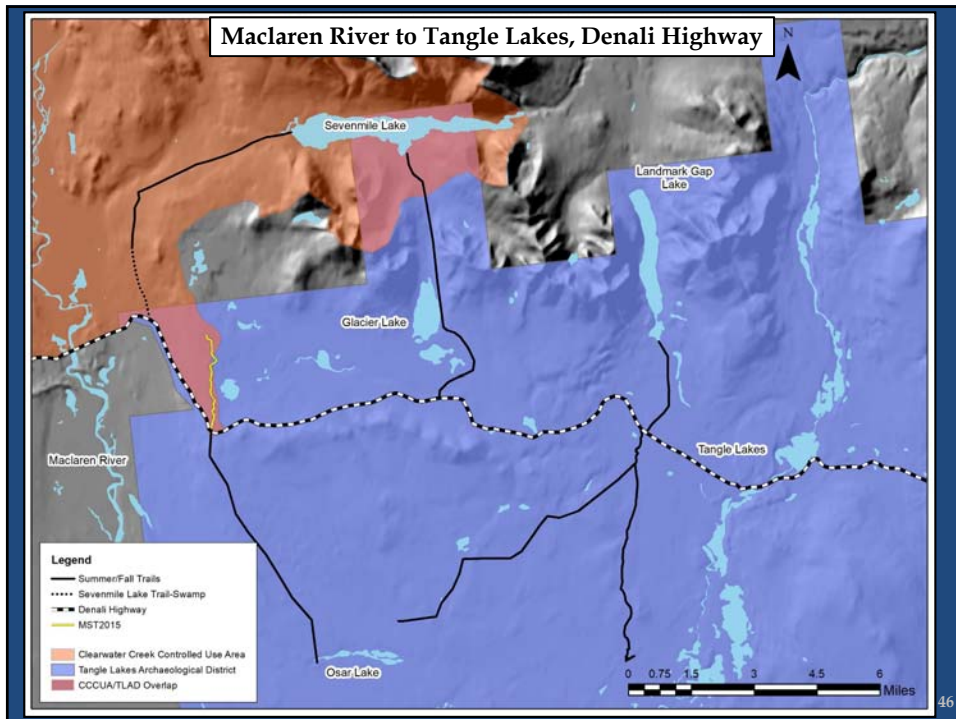


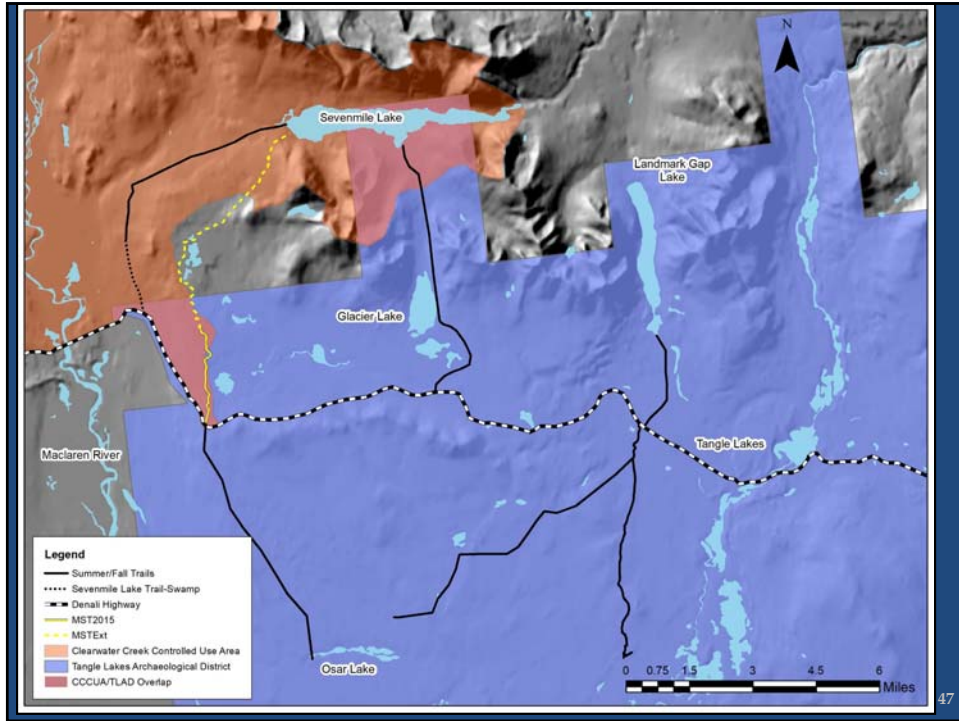
Game Management Unit 13

Area: 23,361 mi<sup>2</sup>

Centrally located

45





## Proposal 128

## 13 Controlled Use



Proposal 128

13 Controlled Use



49

Proposal 128

13 Controlled Use

State Restricted Areas (Page 75):

**2) Clearwater Creek Controlled Use Area:** north of Denali Hwy, west of and including the Maclaren Summit trail and the Maclaren River drainage, and east of, and including eastern bank drainages of the Middle Fork of the Susitna River downstream from and including the Susitna Glacier, and the eastern bank drainages of Susitna River downstream from its confluence with the Middle Fork, **is closed to the use of motorized vehicles for hunting, including transportation of hunters, their hunting gear, and/or parts of game. This includes the Maclaren Summit Trail within the Clearwater Creek Controlled Use Area. Except you may use motorized vehicles for hunting brown/grizzly bears, wolves, and small game from Mar 15-June 30.** This does not prohibit motorized access, or transportation of game on the Denali Hwy and adjacent highway vehicle parking areas.

**6) Tangle Lakes Archaeological District:** BLM & DNR restrict off-road vehicles to designated trails between MP 16 and MP 37. BLM designated trails include: Swede Lake Trail (MP 16) – 8.7 miles paralleling district boundary and leads into Dickey Lake Trail, Landmark Gap Trail South – branches to west for 6.2 miles, and Osar Lake (MP 37) – 8.2 miles to Osar Lake. DNR designated trails include: Landmark Gap Trail North (MP 24.6) – 2.9 miles to Landmark Gap Lake, Glacier Gap to Sevenmile Lake (MP 30.5) – 3 miles to Glacier Gap Lake continuing 4.9 miles to Sevenmile Lake, Maclaren Summit Trail (MP 37) – 2.4 miles, **this authorization does not apply to hunting in the Clearwater Creek Controlled Use Area.** Contact BLM (907) 822-3217 or DNR (907) 269-8503.

50

# Proposal 128

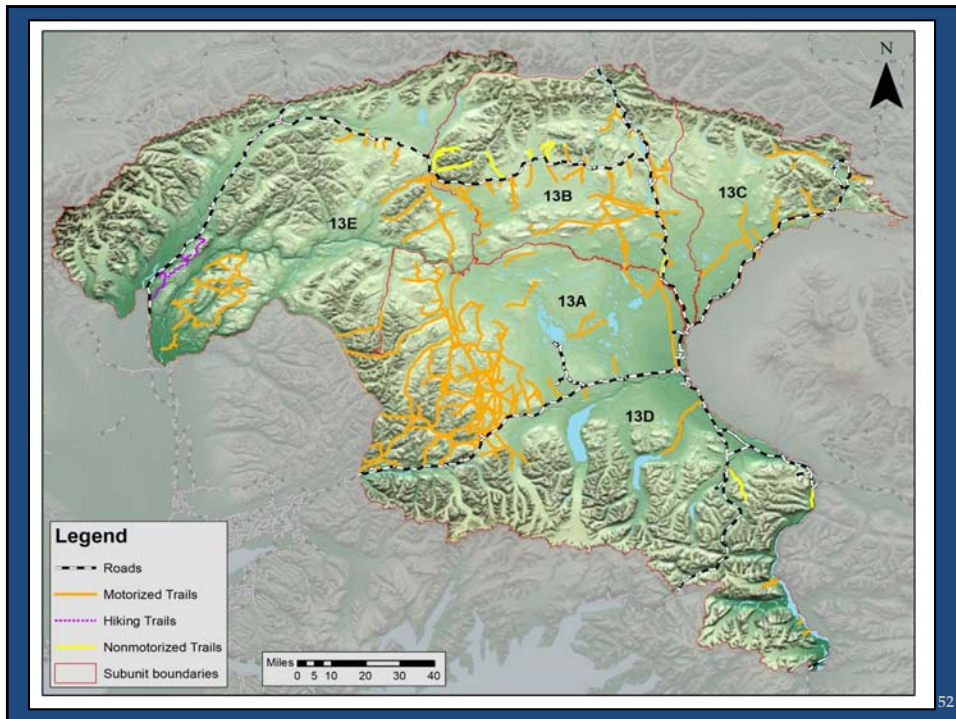
# 13 Controlled Use



## Clearwater Controlled Use Area

The Clearwater Controlled Use Area (CCUA) is closed to hunting with motorized vehicles, regardless of trails available within the area. The area is about 894 square miles and includes the Maclaren Summit Trail which is designated as a trail for motorized use under the Tangle Lakes Archaeological District. Many hunters assume they can use this trail (and the other trails in the area) as long as they keep their motorized vehicle on the trail and hike off trail to get to caribou, or as long as they don't start hunting until the trail extends outside of the controlled use area. This is not the case. *It is illegal to use motorized vehicles to access caribou hunting from these trails.*

51



52

### Success Rates of Caribou Hunters in Unit 13, 2007-2017



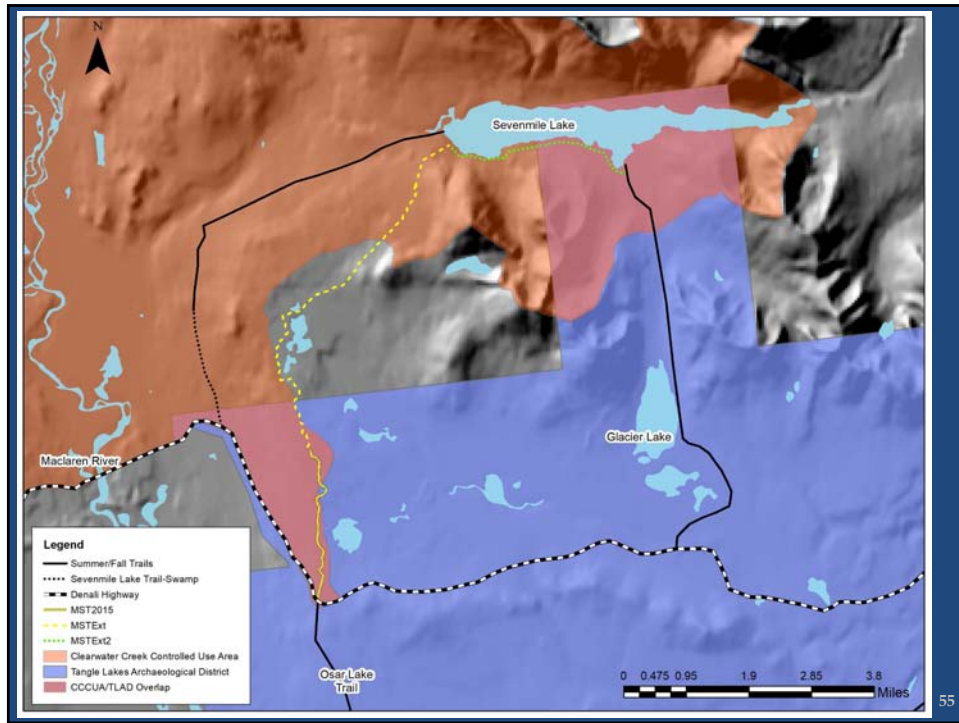
53

### Proposal 128

### 13 Controlled Use



54



## Proposal 128

## 13 Controlled Use

Modify the Clearwater Creek Controlled Use Area

Department Recommendation: **SUPPORT w/ amendments**

Department Proposal *Modified by BOG*

Copper Basin: 8-0-0 Amend CCCUA boundary but **OPPOSED** to motorized hunting on MST

Denali: 0-6-0 **OPPOSED** to motorized hunting access on MST

Paxson: 0-4-0 **OPPOSED** to motorized hunting access on MST

ToK Cutoff: Have not voted on Prop 128 but supported original Prop 123 in 2018

## PROPOSAL 147

Lake Iliamna Advisory Committee

### Effect of Proposal

Change Unit 9B brown bear season back to September 20–October 21 & May 10–31.

### Recommendation

- Support change in fall season
- Neutral on spring season change

Lake Iliamna AC:  
Support (5-0)

57

## Current Regulations

### Unit 9, Residents

|                            |                |                  |
|----------------------------|----------------|------------------|
| RB525<br>near-village hunt | July 1–June 30 | 1 bear per year; |
|----------------------------|----------------|------------------|

### 9B, Both

|                             |                                    |                    |
|-----------------------------|------------------------------------|--------------------|
| RB369, RB370<br>per 4 years | Oct 7–21 (odd)<br>May 10–25 (even) | Biennially; 1 bear |
|-----------------------------|------------------------------------|--------------------|

### Residents

|                                |              |                  |
|--------------------------------|--------------|------------------|
| RB505<br>subsistence hunt only | Sep 1–May 31 | 1 bear per year; |
|--------------------------------|--------------|------------------|

### 9A, 9C, 9D, 9E, Both

|                             |                                    |                    |
|-----------------------------|------------------------------------|--------------------|
| RB368, RB370<br>per 4 years | Oct 7–21 (odd)<br>May 10–25 (even) | Biennially; 1 bear |
|-----------------------------|------------------------------------|--------------------|

### Residents

|   |              |                  |
|---|--------------|------------------|
| RB502, 9E only<br>subsistence hunt only | Sep 1–May 31 | 1 bear per year; |
|---|--------------|------------------|

PROPOSAL  
147

Nov 1–Dec 31

58

## Proposed Regulations

### 9B, Residents & Nonresidents

RB369, RB370

Sep 20–Oct 21

Biennially; 1 bear per 4 years

May 10–31

PROPOSAL 147

59

## Game Management Unit 9



### Statistics

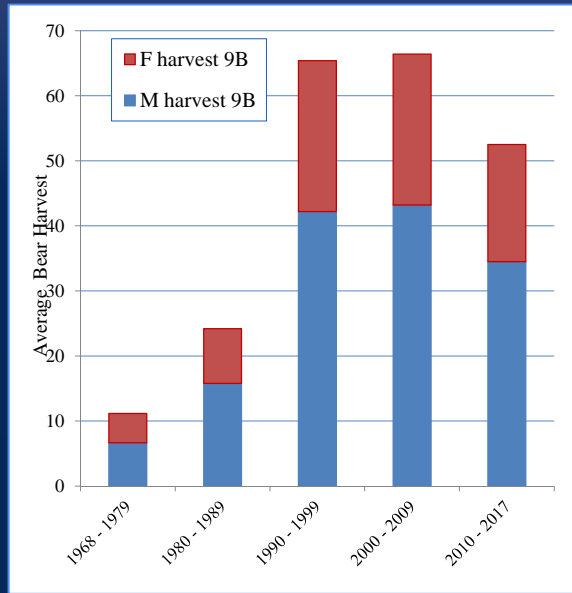
|             |                        |
|-------------|------------------------|
| Area:       | 34,000 mi <sup>2</sup> |
| Length:     | 600 miles              |
| Population: | 4,000                  |
| Villages:   | 20                     |

Proposal 147

60

### Average Bear Harvest by Decade in Unit 9B

- Approximately 50 bears taken biennially.
  - 15 females taken biennially

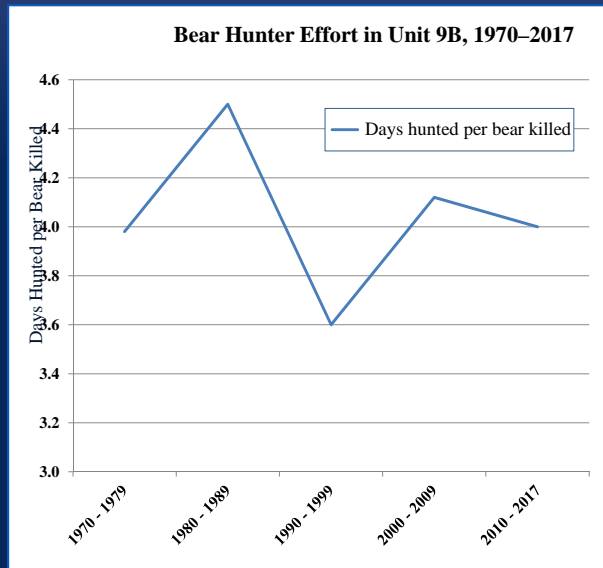


PROPOSAL  
147

6  
1

### Hunter Success in Unit 9B

- 53% for residents and nonresidents combined in registration hunts
- 4 days hunted per bear killed on average
  - Hunter effort stable last 2 decades



PROPOSAL  
147

6  
2

## PROPOSAL 147

Lake Iliamna Advisory Committee

### Effect of Proposal

Change Unit 9B brown bear season back to September 20–October 21 & May 10–31.

### Recommendation

- Support change in fall season
- Neutral on spring season change

*Lake Iliamna AC:  
Support (5-0)*

63

## PROPOSAL 148

Public

### Effect of Proposal

Change Unit 9B brown bear season back to September 20–October 21 & May 10–25

### Recommendation

- Support change in fall season
- Neutral on spring season change

*Lake Iliamna AC:      Take no action*

64





## Considerations

- Only 3 bears harvested May 26–31 during the last 2 seasons in Unit 9B
- Extra week allows guides to add hunts
- Guided hunters often harvest wolves

PROPOSAL 148

6  
7

## PROPOSAL 148

Public

### Effect of Proposal

Change Unit 9B brown bear season back to September 20–October 21 & May 10–25

### Recommendation

- Support change in fall season
- Neutral on spring season change

*Lake Iliamna AC:*

*Take no action*

68



# Proposal #129

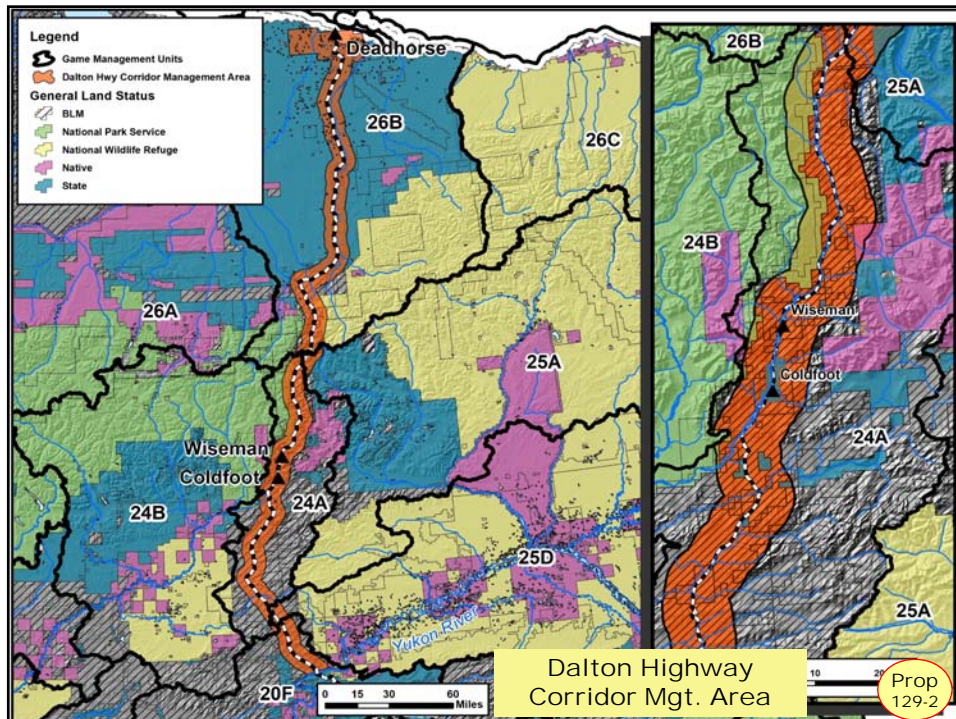
## Clarify Dalton Highway Corridor Management Area (DHCMA) Regulations

Proponent - Alaska Wildlife Troopers

ADF&G - Neutral

Dalton Highway Corridor Mgt. Area

Prop  
129-1



# Proposal #129

## Regulations

- 5 AAC 92.530(7) - (DHCMA)
- 5 AAC 92.990/5 AAC 92.004 (c) - (definitions)

## Statutes

- AS 19.240.10 - (Highways)
- AS 16.05.789 - (Fish and Game)

## Federal Regulations

- 43 CFR 8341.1 (d)(3)/ANILCA section 811(b)

Dalton Highway Corridor Mgt. Area

Prop  
129-3



# Proposal #129

## Clarification needed

- Based on 5 AAC 92.530,
- Can trappers transport game parts or furbearers by snowmachine in the DHCMA?

Dalton Highway Corridor Mgt. Area

Prop  
129-4

## Proposal #129

### Current Management

- Big Game harvest is sustainable under existing regulations.
- Furbearer trapping has been allowed and harvest is sustainable under the current seasons and bag limits.

There are no biological issues with the current seasons and bag limits for all species, under the historical interpretation of the DHCMA 5 AAC 92.530.

Dalton Highway Corridor Mgt. Area

Prop  
129-5



## Proposal #129

### Clarify Dalton Highway Corridor Management Area (DHCMA) Regulations

Proponent – Alaska Wildlife Troopers

ADF&G – **Neutral**

Dalton Highway Corridor Mgt. Area

Prop  
129-6

**Proposal 150** Moose/Unit 18

Change the moose season in the area South of the Eek River drainage and north of the Goodnews Drainage to a Registration hunt.

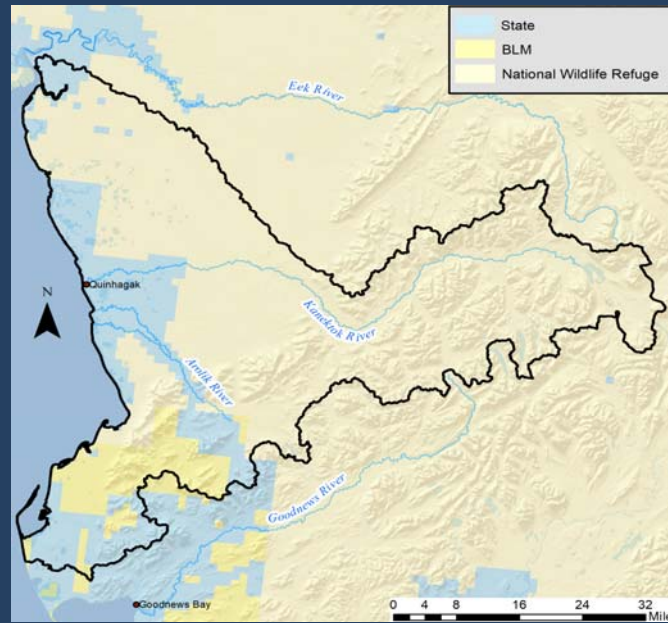
Recommendation: Neutral  
Department Proposal

|                        |                 |
|------------------------|-----------------|
| Bethel AC              | 10-0            |
| Central Bering Sea AC  | Meeting pending |
| Coastal Lower Yukon AC | Did not vote    |
| Lower Kuskokwim AC     | Did not vote    |
| Mid-lower Yukon AC     | Did not vote    |

75



## Hunt Area with land ownership



77

## Discussion

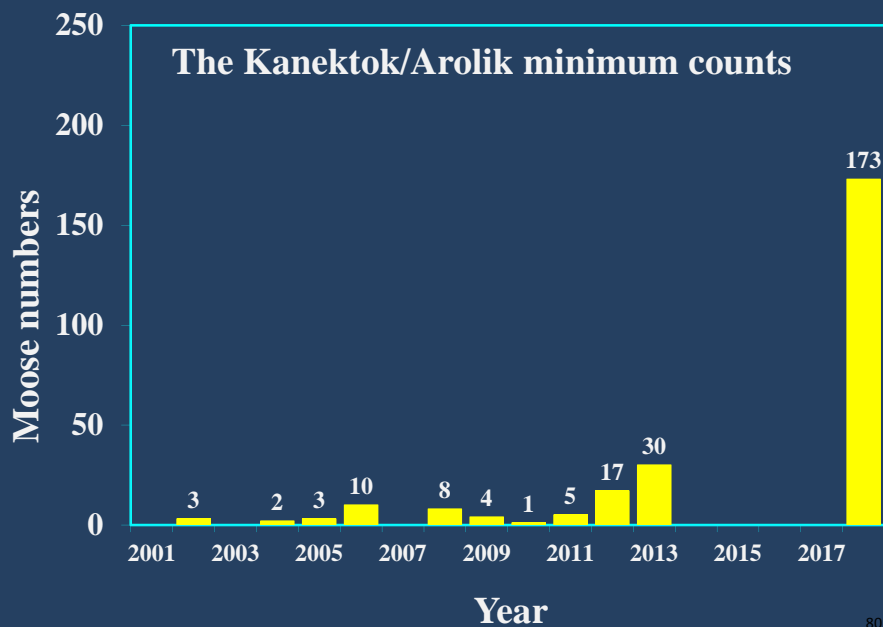
- This change is from an ongoing public process that involves the community of Quinhagak, USFWS and Fish and Game
- Positive ANS for of Unit 18  
ANS is 200-400
- Positive IM for Unit 18
  - Population Objective is 1,000-2,000
  - Harvest Objective is 60-200
- Total moose Population for unit is ~ 17,000, harvest is about 800 and harvestable surplus is 1500 to 2000.

78

## Discussion

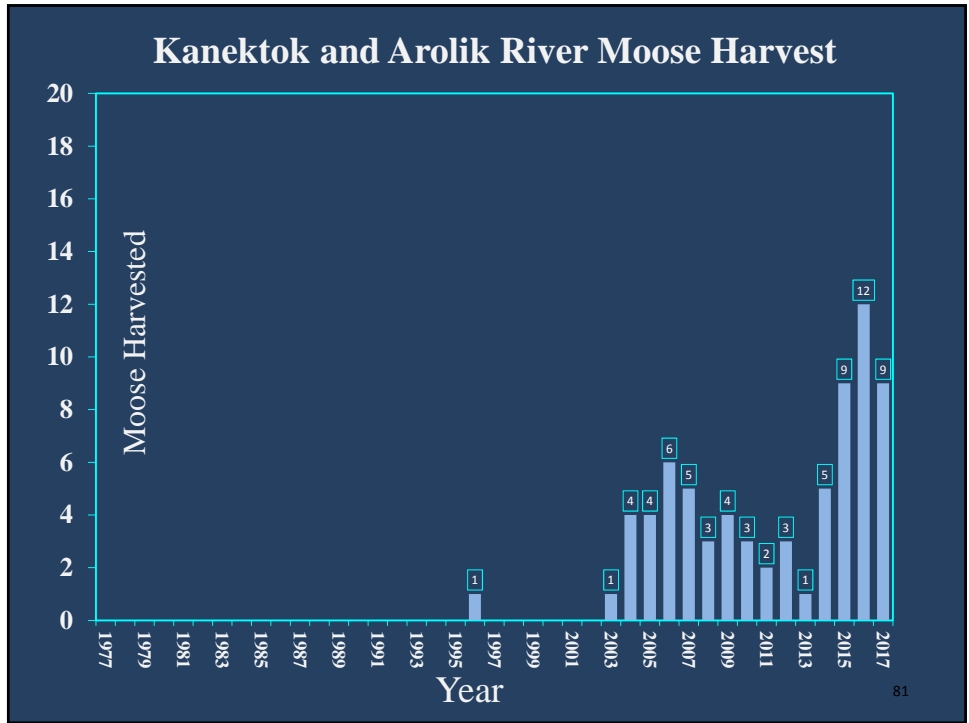
- Federal Lands are currently closed and a proposal to open federal lands using a State Registration permit has been submitted
  - Add the permit conditions of limited permit issuance(the community of Quinhagak and only before the season starts)
  - Permit would also include the condition of no airplane access

79



80





**Proposal 150**
Moose/Unit 18

Change the moose season in the area South of the Eek River drainage and north of the Goodnews Drainage to a Registration hunt.

Recommendation: Neutral

Department Proposal

|                        |                 |
|------------------------|-----------------|
| Bethel AC              | 10-0            |
| Central Bering Sea AC  | Meeting pending |
| Coastal Lower Yukon AC | Did not vote    |
| Lower Kuskokwim AC     | Did not vote    |
| Mid-lower Yukon AC     | Did not vote    |

82

**Proposal 149**  
**Establish seasons and bag limits for mule deer,**  
**excluding Sitka black-tailed deer**

**Department Proposal**

**Department Recommendation:**  
**Neutral**

**AC Recommendation:**

83

Proposal 149

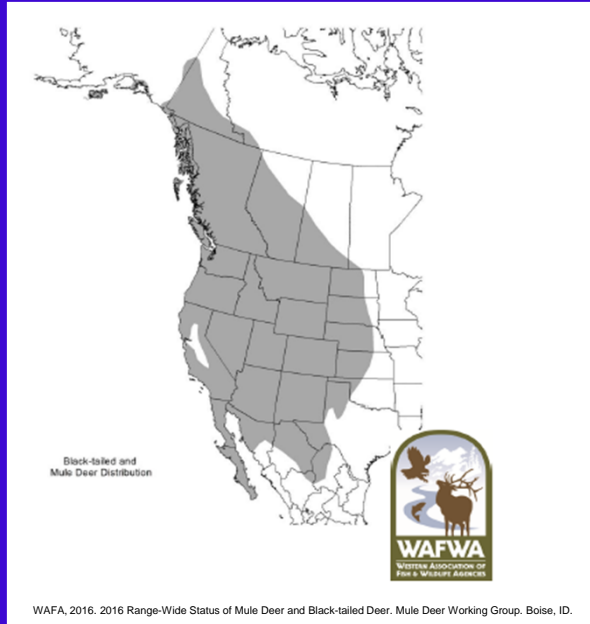
**Mule & White tail Deer Proximity and Health Status**

- Yukon mule deer population estimate: ~1000
  - Primary distribution proximate to Whitehorse
  - Yukon River drainage and west of Kluane Lake.
- White tailed deer found in southern Yukon and B.C.
- As of spring 2015, 19 of 33 (~58%) of mule deer sampled in Yukon were positive for Moose winter tick
- Mule deer in B.C. high rates of winter tick, arterial worm, liver fluke, large stomach worm
- Mule deer in Washington heavily infested with exotic lice, spreading north and east rapidly on other cervidae

84

### Mule Deer & Black-tailed Deer Distribution

Proposal 149



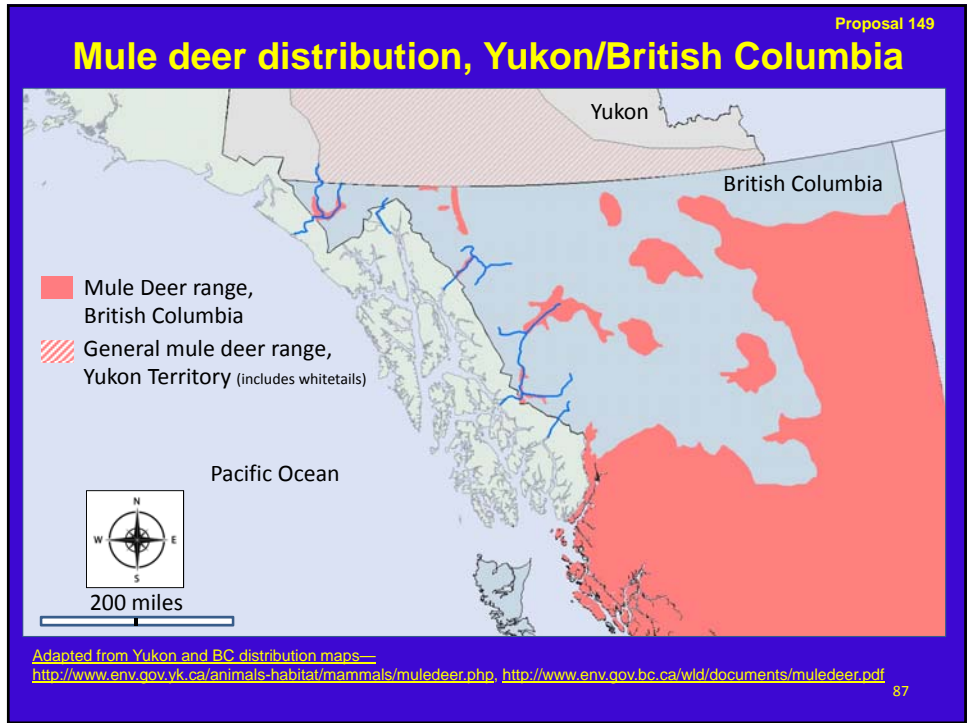
85

### Mule deer Observations, Interior Alaska

Proposal 149



86



Proposal 149

### Management Considerations


- **Attempt to remove observed animals**
- **Develop season & bag limit**
  - **New regulation 5 AAC 85.**
    - General season
    - Registration permit
    - Targeted hunt
  - **Sample collection**
  - **Confusion with Sitka black-tail deer**
- **Manage for species growth**

88

Proposal 149

**Board Direction**

- **No closed season**
- **No bag limit**
- **Submit carcass to ADF&G**
  - **5 AAC 92.220 Salvage of game meat, furs, and hides**
- **By registration permit**
  - **5 AAC 92.052 Authority to issues permits via phone when necessary**
- **Outreach to mitigate incidental take of Sitka black-tail deer**



89

**Proposal 149**  
**Establish seasons and bag limits for mule deer, excluding Sitka black-tailed deer**

**Department Proposal**

**Department Recommendation:**  
**Neutral**

**AC Recommendation:**

90